

Kubota®



KUBOTA COMPACT EXCAVATOR

**KX**

**KX057-4**

Superior 5-ton compact excavator with the right power and flexibility for most all of your needs.



Set to redefine the entire 5-ton class, this Kubota compact excavator with a deluxe cab puts you in luxury and on top of almost any challenge.

# HYDRAULIC ANGLE BLADE

Save time and work more efficiently. With a simple movement of the dozer lever, the hydraulic angle blade\* can be angled to the right or left to push soil to the side as the machine moves forward, eliminating the need for repetitive repositioning at right angles when backfilling trenches.

(\*Optional)



25° Pivot Angle

## 1. Bolt-on Cutting Edge\*

The cutting edge protects the angle blade during heavy-duty dozing operations. The reversible cutting edge is divided into two sections to easily invert the edge for continued use.

*\*Standard on Angle Blade models.*

## 2. Durable Fixed Hook

The thick side plate of the angle blade enhances the strength of the fixed hook. The hole is enlarged to accommodate thicker chains for a more secured tie-down.



## Hydraulic Dozer Control Lever

A hydraulic-type dozer control lever provides smooth and easy operation.

## Generous Approach Angle

The angle blade boasts an approach angle of 28°, allowing the KX057-4 to climb over obstacles with ease.



## Tight Spots

The angle blade lets you work efficiently in confined spaces, alongside walls, and near busy roads. No wider than the tracks, it's also easy to transport between jobs.



### Easy Operation

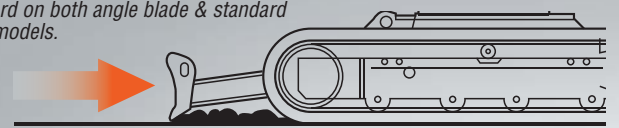
Angle blade operation has been enhanced for easier control. Up, down and float movements are made with a single lever, while left and right angle positioning is made by the rocker switch on top of the lever.



### Float Position

The float function is a standard feature on the KX057-4\*. Ground finishing work can be completed quickly and simply without the need to adjust the dozer height. After backfilling, simply travel backwards along the covered ditch with the dozer in the float position.

*\*Standard on both angle blade & standard blade models.*





# DELUXE INTERIOR

On the KX057-4, your comfort truly comes first. The luxurious cab features a wider entrance, generous legroom and a deluxe seat. The Roll-over Protective Structure (ROPS) and Falling Object Protection Structure (FOPS) maximize safety. Operability is greatly enhanced with more easy-to-use features than ever before.

## Easy-open Front Slide Window

Unlike many excavator windows, the front glass window of the KX057-4 opens with ease. Just flip the latches on the window sides and slide it up. A gas-assist mechanism makes this action almost effortless.



## Wider Entrance

The KX057-4 features a much wider door and more ample foot space, making it a breeze to get on and off the excavator.





**A. Deluxe Suspension Seat**

Designed and engineered to fit better and to keep you working longer comfortably, Kubota's high-back suspension seat reduces strain and minimizes operator fatigue. It reclines to accommodate your individual posture, and offers weight compensation, firm and adjustable wrist support and retractable seat belts.

**B. 2-speed Travel Switch**

By placing the 2-speed travel switch on the dozer lever, dozing operations can be done faster and easier.



**C. Cup Holder**

With the convenience of a bigger cup holder, you can quench your thirst and work longer without leaving the cab.

**D. Adjustable Wrist Rest**

A thoughtfully designed wrist rest enhances operation and reduces operator fatigue.

**E. Air Conditioning**

The overall air circulation in the cab has been improved, thanks to a stronger cooling/heating unit and the positioning of six vents around the operator to offer better all-round comfort.



**TPSS**

The Two-Pattern Selection System positioned under the seat allows the operator to shift control styles conveniently while seated. A simple turn of a switch is all it takes to select between the ISO pattern and the SAE backhoe pattern.



# Kubota Original Direct Injection Engine

The KX057-4 is powered by Kubota's impressive 47.6 HP direct injection engine. Engineered with the power to maximize digging and lifting performance, it also delivers minimized noise, vibration and fuel consumption.



## Adjustable Maximum Oil Flow Control For Auxiliary Circuits 1 and 2\*

The maximum oil flow settings of both circuits are conveniently adjustable from the digital panel – no additional tools or complex manual adjusting procedures are necessary. You can even program up to five oil flow rates corresponding to specific attachments into memory on the digital panel.



*\*Auxiliary circuit 2 is optional.*

# SUPERIOR PERFORMANCE

Combining the power for demanding jobs and the versatility to work in any condition, the Kubota KX057-4 is ready to take on most challenges. It's designed with excellent stability to work with a variety of attachments. Versatility is greatly enhanced with precise oil flow control for auxiliary circuits. With upgraded digging and lifting power, smoother travel performance and improved versatility, this Kubota truly has what you need to get the job done well.



### **Increased Boom Lifting Capacity**

The KX057-4 features a significantly improved boom lifting capacity.

### **Enhanced Digging Force**

The KX057-4 delivers an impressive bucket digging force of 11,177 lbf. Its powerful and well-balanced arm and bucket allow the operator to dig faster and more efficiently even in the toughest conditions.

### **Thumb Bracket And Relief Valves**

The optional hydraulic thumb makes short work of a variety of loading and material handling jobs. The factory installed mount brackets and hydraulics significantly reduce the time needed to mount accessories.

### **Increased Travel Speed**

Featuring increased maximum high and low travel speeds of 3.1 mph and 1.8 mph respectively, the KX057-4 truly takes productivity to new heights.

### **Increased Traction Force**

The traction, when operating in low speed, has been increased to 14,480 lbf. This helps ensure an efficient and productive day on the job.

### **Load Sensing Hydraulic System**

Kubota's improved 3-pump load sensing hydraulic system ensures smoother operation, regardless of load size. It allows hydraulic oil to flow according to the specific range of the operator's lever motion. Additional benefits include greater fuel economy and smoother travelling.

### **Auto Down Shift**

The auto down shift system enables automatic travel shift from high to low depending on traction effort and terrain. This gives smoother simultaneous operations when dozing and turning.

# One-sided Engine Maintenance

Kubota has made routine maintenance extremely simple by consolidating primary engine components onto one side for easier access. Engine and other vital components can be inspected quickly and easily.

- A.** Dual Element Air Cleaner
- B.** Air Cleaner Monitor
- C.** Water Separator
- D.** Fuel Filter
- E.** Starter Motor
- F.** Alternator



## Tool Box

A large tool box is positioned within the side hood so necessary tools for small checkups are always within easy reach.



## Refuelling

When refuelling, simply press the refuelling signal button to monitor the progress. The beeping signal accelerates as the fuel approaches full and thus avoiding spillage.



# MAINTENANCE & SAFETY

Although your Kubota excavator is state-of-the-art, its maintenance doesn't get much easier. Thanks to the full-opening rear and right side hoods, engine, control valves and various components are accessible for easy inspection and repair.



## Steel Panels

The KX057-4 features durable hood and side panels that open easily for quick inspection and routine maintenance. The panels are within the counterweight edge for protection and durability.

## Parking Brake

A travel negative brake comes as a standard safety feature on the KX057-4 for added peace of mind during transportation or parking on hilly areas.

## Grease Gun Holder

A convenient space within the side hood is designed to keep the grease gun handy for daily servicing.



# NEW DIGITAL PANEL



Building on the excellence of Kubota's Intelligent Control System, the new digital panel puts even more information and convenience at the operator's fingertips. The wider and user-friendly digital panel is positioned to the front right corner of the operator, thus improving visibility. With easier access, simpler settings, easy-to-read indicators and alerts, you'll always be aware of the excavator's functioning status.

## Operation History Record

Operation history is automatically recorded on the KX057-4. You can trace back up to 90 days of the machine's usage dates by simply checking the built-in calendar.



**Service Mode**



**Warning Mode**



**Operation History Record**



**Max. Oil Flow Setting (AUX1 and optional AUX2)**

## Convenient Pre-installed Attachment Icons



AUX (Standard)



Tilt Bucket



Breaker



Clamshell



Auger



Grapple



Rotary Grapple



Brush Cutter

## Kubota Original Anti-theft System

Your KX057-4 is protected by Kubota's industry-leading anti-theft system. Only programmed keys will enable the engine to start up. Attempting to start with an un-programmed key will activate the alarm. Newly enhanced features include an alert to remind the operator to extract the key after operation, and an LED to alert potential thieves that the system is activated.



The red programming key programs the individual keys. The individual black keys start the engine.

# KX057-4

## STANDARD EQUIPMENT

### Safety system

- Engine start safety system
- Travel motor with disc brake
- Swivel motor with disc brake
- Kubota original anti-theft system
- All hydraulic control

### Working equipment

- Auxiliary hydraulic circuit 1
- 2 working lights on cab and 1 light on the boom
- Dozer blade with float function
- Thumb bracket and relief valve

### Operator's space

- ROPS/FOPS canopy
- Weight-adjustable full suspension seat
- Retractable seat belt
- Hydraulic pilot control levers with wrist rests
- Travel levers with foot pedals
- Two pattern selection system
- Digital panel
- 12V power source
- Cup holder
- Horn
- 2-speed travel switch on dozer lever

### Engine/Fuel system

- Double element air filter
- Auto idling system
- Water separator with drain cock

### Undercarriage

- Dozer blade with float
- 400 mm rubber track
- 1 × upper track roller
- 5 double-flange track rollers on each side
- 2-speed travel with auto-shift

### Hydraulic system

- Pressure accumulator
- Hydraulic pressure checking ports
- Straight travel circuit
- Third line hydraulic return
- 3-pump load sensing system
- Adjustable maximum oil flow on auxiliary hydraulic circuits 1 (and 2)
- Auxiliary circuit operation on control levers

### Others

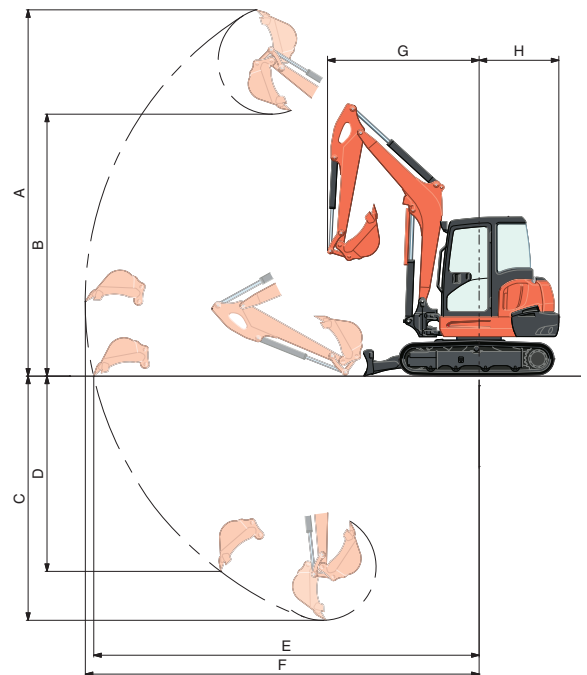
- Tool box
- Grease gun holder

## OPTIONAL EQUIPMENT

- Canopy lights
- Rear working lights
- Beacon lights
- 1'3.7" (400 mm) steel track on Angle blade model
- Additional auxiliary hydraulic circuit 2 (adjustable max. oil flow control)
- Angle blade with float function and BOE
- Travel alarm
- Spark arrest muffler

## WORKING RANGE

| Model |                               |              | KX057-4        |                |
|-------|-------------------------------|--------------|----------------|----------------|
| A     | Max. digging height           | ft. in. (mm) | 18'10" (5740)  |                |
| B     | Max. dumping height           | ft. in. (mm) | 13'8.6" (4180) |                |
| C     | Max. digging depth            | ft. in. (mm) | 12'8.2" (3865) |                |
| D     | Max. vertical digging depth   | ft. in. (mm) | 5'7.3" (1710)  |                |
| E     | Max. digging radius at ground | ft. in. (mm) | 20'0.5" (6110) |                |
| F     | Max. digging radius           | ft. in. (mm) | 20'5.7" (6240) |                |
| G     | Min. turning radius           | W/O swing    | ft. in. (mm)   | 7'11.3" (2420) |
|       |                               | W swing      | ft. in. (mm)   | 6'9.1" (2060)  |
| H     | Min. tail turning radius      | ft. in. (mm) | 4'2" (1270)    |                |

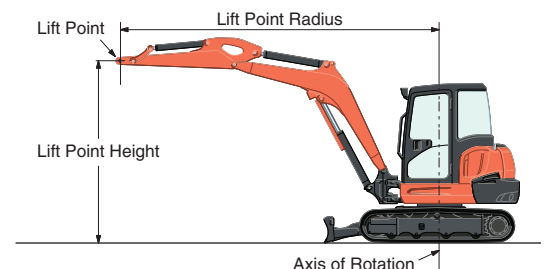


## LIFTING CAPACITY

Canopy rubber

| LIFT POINT HEIGHT (ft) | LIFTING CAPACITY OVER-FRONT BLADE DOWN<br>unit=1000 lbf |      |      | LIFTING CAPACITY OVER-SIDE<br>unit=1000 lbf |      |      |      |
|------------------------|---|------|------|---|------|------|------|
|                        | LIFT POINT RADIUS (ft)                                  |      |      | LIFT POINT RADIUS (ft)                      |      |      |      |
|                        | 12  | 16   | MAX  | 12  | 16   | MAX  |      |
| 10                     | 2.33  | 2.28 | 1.96 | 2.30  | 1.43 | 1.36 |      |
| 8                      | 2.63  | 2.33 | 1.95 | 2.24  | 1.42 | 1.26 |      |
| 4                      | 3.41  | 2.55 | 2.05 | 2.09  | 1.36 | 1.16 |      |
| GL                     | 0   | 3.89 | 2.67 | 2.37  | 1.96 | 1.31 | 1.19 |

Machine with canopy and rubber crawler, without bucket

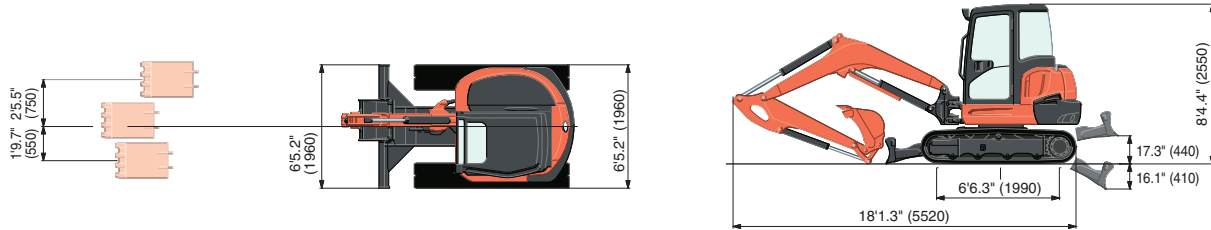


# SPECIFICATIONS

| Model  |                          | KX057-4                     | KX057-4 Angle Blade                            |
|--|--------------------------|-----------------------------|--|
| Type of ROPS / FOPS  |                          | Cab                         |  |
| Type of tracks   |                          | Rubber or Wide Steel        | Standard Steel                                 |
| Engine   | Model                    | Kubota V2607-DI             |  |
|  | Output (SAEJ 1995 gross) | HP (kW) / rpm               | 47.6 (35.5) / 2200                             |
|  | Output (SAEJ 1349 net)   | HP (kW) / rpm               | 45.4 (33.8) / 2200                             |
|  | Displacement             | cu. in. (cc)                | 159.6 (2615)                                   |
| Dimensions   | Overall length           | ft. in. (mm)                | 18'1.3" (5520)                                 |
|  | Overall height           | ft. in. (mm)                | 8'4.4" (2550)                                  |
|  | Overall width            | ft. in. (mm)                | 6'5.2" (1960)                                  |
|  | Min. ground clearance    | ft. in. (mm)                | 1'0.2" (310)                                   |
| Hydraulic system   | Pump capacity            | GPM (ℓ/min)                 | 14.8 (56.1) Variable × 2 / 9.8 (37.0) Gear × 1 |
|  | Auxiliary hydraulic flow | AUX1 / AUX2 GPM (ℓ/min)     | 19.8 (75) / 9.8 (37)                           |
|  | Max. breakout force      | Bucket / Arm lbf. (kgf)     | 11177 (5070) / 5644 (2560)                     |
| Drive system   | Travel speed             | Low / High mph (km/h)       | 1.8 / 3.1 (2.8 / 4.9)                          |
|  | Max. traction force      | Low speed lbf. (kgf)        | 14480 (6567)                                   |
|  | Tumbler distance         | ft. in. (mm)                | 6'6.3" (1990)                                  |
|  | Crawler length           | ft. in. (mm)                | 8'2.4" (2500)                                  |
|  | Shoe width               | Rubber / Steel ft. in. (mm) | 1'3.7" (400)                                   |
|  | Ground contact pressure  | Rubber                      | psi (kgf/cm <sup>2</sup> )                     |
| Steel  |                          | psi (kgf/cm <sup>2</sup> )  | -  |
| Wide Steel   |                          | psi (kgf/cm <sup>2</sup> )  | 3.51 (0.247)                                   |
| Swing system   | Unit swing speed         | rpm                         | 9.3  |
|  | Boom swing angle         | Left / Right degree         | 70 / 55  |
| Blade  | Dimensions               | Width ft. in. (mm)          | 6'5.2" (1960)                                  |
|  |                          | Height ft. in. (mm)         | 1'4.1" (410)                                   |
|  | Max. lift above ground   | in. (mm)                    | 17.3" (440)                                    |
|  | Max. drop below ground   | in. (mm)                    | 16.1" (410)                                    |
|  | Angle                    | Left / Right degree         | -  |
| Hydraulic oil (Reservoir / System)                           | gal (ℓ)                  | 11.9 (45) / 20.9 (79)       |  |
| Fuel reservoir   | gal (ℓ)                  | 19.8 (75)                   |  |
| Operating weight<br>(Including operator's weight @ 175 lbf.) | Rubber                   | lbf. (kgf)                  | 12345 (5600)                                   |
|  | Steel                    | lbf. (kgf)                  | -  |
|  | Wide steel               | lbf. (kgf)                  | 13010 (5900)                                   |

The company reserves the right to change the above specifications without notice. This brochure is for descriptive purposes only. Please contact your local Kubota dealer for warranty information. For your safety, Kubota strongly recommends the use of a Rollover Protective Structure (ROPS) and seat belt for almost all applications.

## DIMENSIONS



Unit: ft. in. (mm)



### KUBOTA CANADA LTD.

Head Office: 5900 14th Avenue, Markham, Ontario L3S 4K4 TEL: (905) 294-7477 FAX: (905) 294-6651  
 Delta Distribution Centre: 7979 82nd Street, Delta, B.C. V4G 1L7 TEL: (604) 940-6061 FAX: (604) 940-6067  
 Drummondville Distribution Office: 5705 Place Kubota, Drummondville, PQ, J2B 6V4 TEL: (819) 478-7151 FAX: (819) 478-7836

Visit our web site at: [www.kubota.ca](http://www.kubota.ca)

